

STEPPING STONES



Concrete Pavers • Stone Pavers • Tiles • Garden Walls & Edging
Retaining Walls • Concrete Sleepers • Concrete Blocks • Wall Cladding

STEPPING STONES



BEST PRICE >>>
promise *Terms and conditions apply.

FEATURES

- Natural stone
- Slip resistant
- Hardwearing and durable
- Free samples available

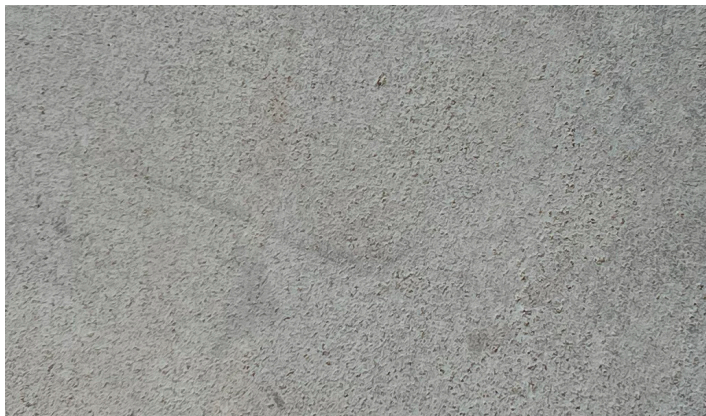
SUITABLE FOR

- Garden pathways
- Lawn pathways
- Stepping stones
- Fill the cavity between the step stones with mulch, pebbles or stone

Specifications	Size	Units Per Pallet	Weight per unit
Basalt	500 x 300 x 30mm	100	14kg each

COLOUR RANGE*

Basalt



*Colours are an indication only. Always sight physical product colour samples before purchase.