

STONE PAVER 450 X 450



Concrete Pavers • Stone Pavers • Tiles • Garden Walls & Edging
Retaining Walls • Concrete Sleepers • Concrete Blocks • Wall Cladding

STONE PAVER 450 X 450



FEATURES

- Slip resistant
- Smooth finish
- Durable and hardwearing
- Free samples available

SUITABLE FOR

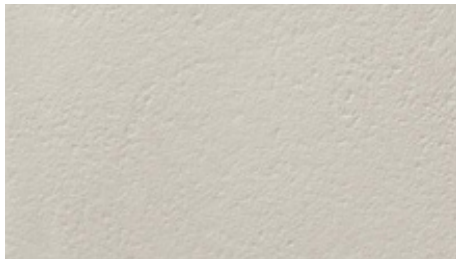
- Entertaining areas
- Pool areas
- Patios and alfresco
- Courtyards
- Garden paths and walkways
- Stepping stones



Specifications	Size	No. per m ²	Weight per m ²	m ² per pallet
Stone Paver	450 x 450 x 40mm	4.94	94.4kg	12.15
Bullnose	450 x 450 x 40mm	N/A	19.1kg each	27.02 LM

COLOUR RANGE*

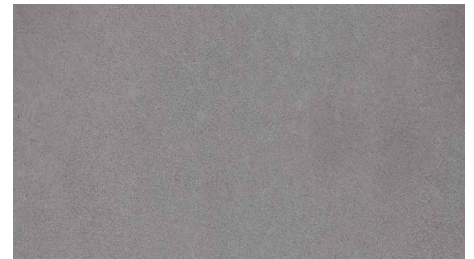
Linen



Charcoal



Steel



*Due to natural resources used in production there are slight colour variations between batches. Pool copings can differ in appearance to the body tile and mixing 2 different sizes can end up with slight variations. Colour swatches are a guide only. Samples you receive may also be slightly different to what is received. Stone Pavers should be laid with approximately 2-3mm gap due to thickness variation. Must be laid on soft sand base. This product has a V2 Variance rating.