

# STONE PAVER TRAVERTINE



Concrete Pavers • Stone Pavers • Tiles • Garden Walls & Edging  
Retaining Walls • Concrete Sleepers • Concrete Blocks • Wall Cladding



# STONE PAVER TRAVERTINE



## FEATURES

- Slip resistant
- Natural stone finish
- Durable and hardwearing
- Free samples available

## SUITABLE FOR

- Entertaining areas
- Pool areas
- Patios and alfresco
- Stepping stones



Specifications	Size	No. per m <sup>2</sup>	Weight per m <sup>2</sup>	m <sup>2</sup> per pallet
Stone Paver	500 x 500 x 40mm	4	90.8kg	12
Stone Paver	600 x 400 x 40mm	4.17	91kg	14.42
Bullnose	500 x 500 x 40mm	N/A	22.7kg each	24 LM
Aris Edge	500 x 500 x 40mm	N/A	22.7kg each	24 LM
Aris Edge	600 x 400 x 40mm	N/A	21.8kg each	36 LM

## COLOUR RANGE\*

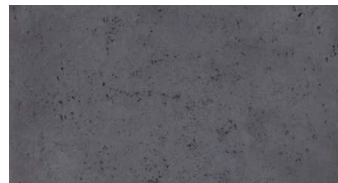
Chalk



Smoke



Bluestone



Steel



\*Due to natural resources used in production there are slight colour variations between batches. Pool copings can differ in appearance to the body tile and mixing 2 different sizes can end up with slight variations. Colour swatches are a guide only. Samples you receive may also be slightly different to what is received. Stone Pavers should be laid with approximately 2-3mm gap due to thickness variation. Must be laid on soft sand base. This product has a V2 Variance rating.